

ROSE OF AVONMORE WALTZ

ARRANGED BY CHARLIE WALDEN

(ALSO ROSE OF SHARON, ROSE OF ALLENDALE)

A

E7

A

A7



D

A

E7

A



A7

D

D#dim

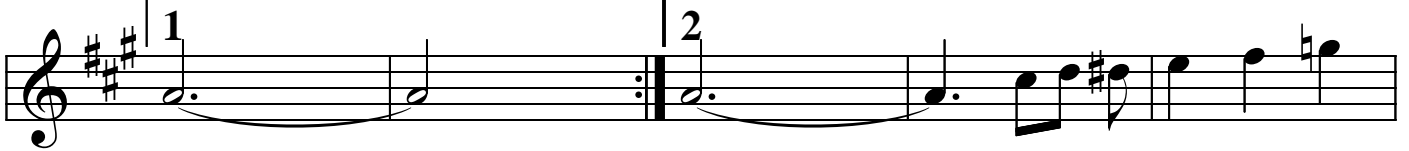
A

E7



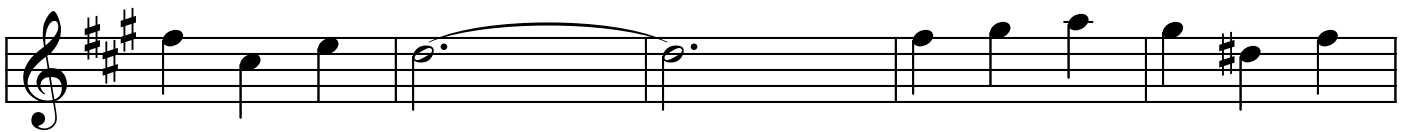
A

A7



D

B7

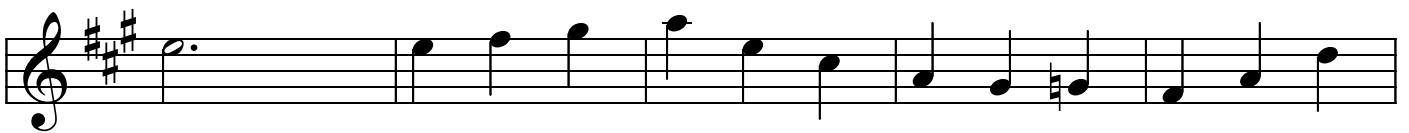


E7

A

A7

D



D#dim

A

E7

A

